



# Daily Technical Trader - Qatar

March 04, 2025





### QE Index Summary

	03 Mar 2025	27 Feb 2025	Chg
Index	10,464	10,445	0.18%
Value QR (mn)	380	812	-53.20%
Trades	17,840	21,137	-15.60%
Volume (mn)	113	228	-50.44%
Stocks Traded	52	53	-1.89%
Gainers	22	16	37.50%
Losers	27	34	-20.59%
Unchanged	3	3	0.00%

Source: Qatar Stock Exchange

### Weekly Market Recommendations:

Time Frame	Trend	Current Level	Target	Support	Resistance
Short-term (23Feb -27Feb)	↓	10,464.09	10,800	10,390	10,830
Medium-term (06Feb- 06Mar)	↑	10,464.09	11,000	10,150	11,130

### Weekly Company Recommendations:

Company Name	Current Price	View	Time Frame	Support	Resistance
QIGD	QR1.682	Positive	Short-term (03 Mar- 06Mar)	QR1.634	QR1.718
BRES	QR2.889	Positive	Medium-term (27 Feb- 27Mar)	QR2.854	QR2.925

### Daily Company Recommendations:

Company Name	Current Price	View	Time Frame	Support	Resistance
VFQS	QR1.997	Positive	1 Day	QR1.980	QR2.012
IQCD	QR13.30	Positive	1 Day	QR13.14	QR13.46
AKHI	QR2.488	Positive	1 Day	QR2.459	QR2.518
QGTS	QR4.499	Positive	1 Day	QR4.418	QR4.538

### List of Stocks Close to Technical Levels

#### Companies Closest to Resistance

Company	Ticker	Mcap (QRmn)	Price	Resistance
Mesaieed Petro	MPHC	17,950.3	1.43	1.45
QNB Group	QNBK	1,53,303.7	16.60	16.60
The Commercial Bank	CBQK	18,299.2	4.54	4.55
Baladna	BLDN	2,381.6	1.24	1.25
Qatar Gas Transport	QGTS	24,927.8	4.50	4.55

#### Companies Closest to Support

Company	Ticker	Mcap (QRmn)	Price	Support
Gulf International Services	GISS	6,128.2	3.15	3.15
Qatar Aluminium	QAMC	7,024.4	1.25	1.25
Ezdan Holding Group	ERES	26,521.3	1.00	1.00
Doha Bank	DHBK	6,014.1	1.94	1.90
Barwa Real Estate Company	BRES	11,092.4	2.86	2.85

#### Companies with RSI over 70 (Overbought)

Company	Ticker	Mcap (QRmn)	Price	RSI
Qatari Investors Group	QIGD	2,090.9	1.68	76.76
Al Khaleej Takaful Group	AKHI	634.0	2.49	71.95
Salam International	SIIS	805.8	0.70	70.59
Mannai Corp	MCCS	1,753.8	3.88	69.44
Commercial Bank	CBQK	18,299.2	4.54	67.16

#### Companies with RSI below 30 (Oversold)

Company	Ticker	Mcap (QRmn)	Price	RSI
Qatar National Cement	QNCD	2,309.9	3.54	23.75
Gulf Warehousing Co	GWCS	1,769.0	3.03	33.15
Qatar General Insurance	QGRI	931.8	1.14	35.35
Masraf Al Rayan	MARK	21,573.0	2.34	35.42
Qatar Cinema & Film	QCFS	147.6	2.40	36.67

Source: Refinitiv, QNBFS Research

### Outlook

The QE Index gained around 18 points on Monday. The index momentarily moved below the key support near 10,400, but later managed to recover. Any close below 10,400 could trigger selling pressure.

## QE Index- Technical Charts

Daily



The Index managed to defend its key support near the channel trendline. However, if the index closes below 10,400, the index may witness selling pressure.

Source: Bloomberg, QNBFS Research

Weekly



The Index moved below the support of the mid-Bollinger band and formed a bearish candle, indicating weakness. Meanwhile, the RSI line on the weekly basis is also moving lower.

Source: Bloomberg, QNBFS Research

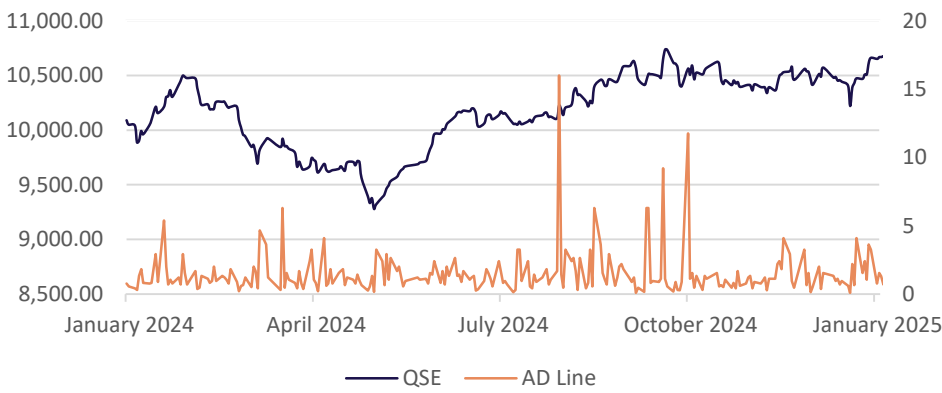
Monthly



The QE Index after taking its support near the mid Bollinger band in January is attempting to move higher.

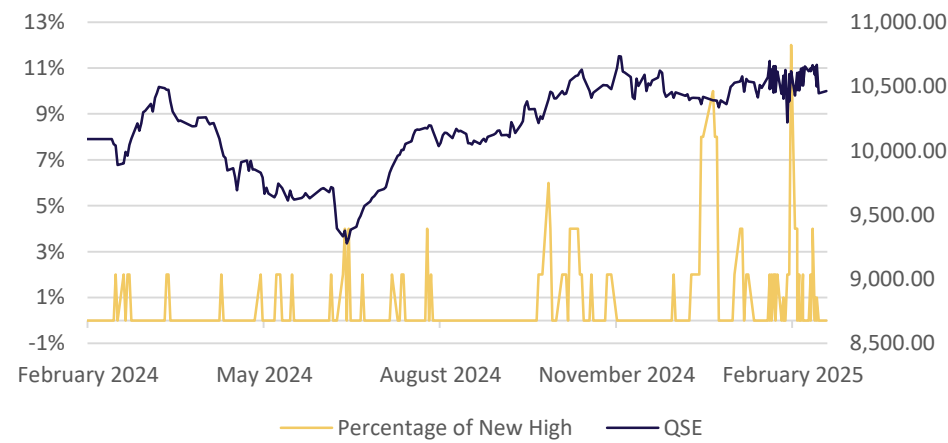
Source: Bloomberg, QNBFS Research

### Advance/Decline Line



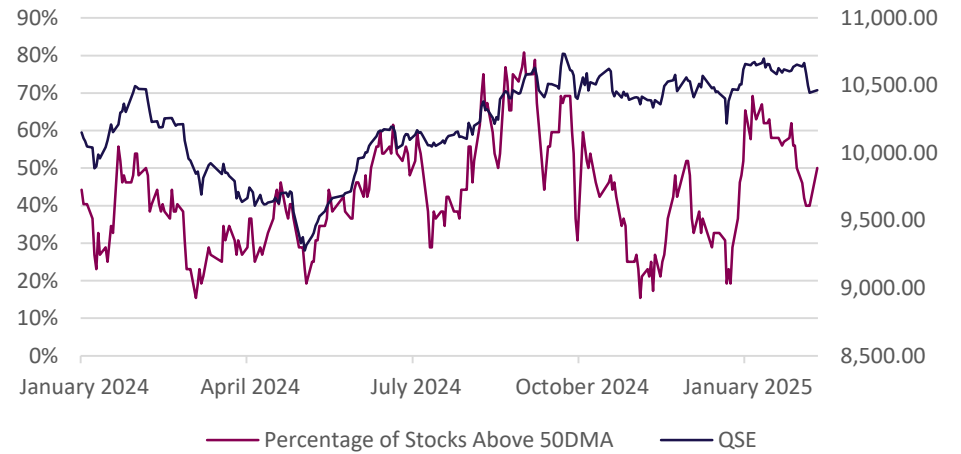
Source: Refinitiv, QNBFS Research

### Percentage of New Highs to Total Market



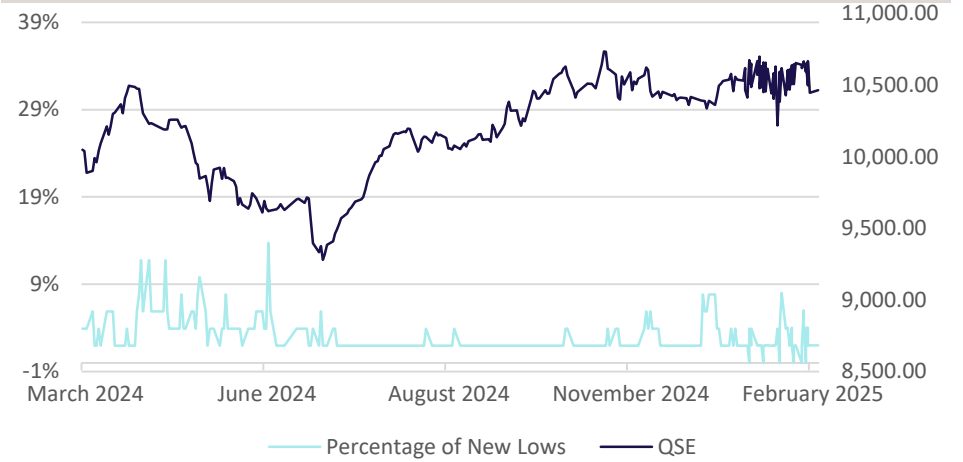
Source: Refinitiv, QNBFS Research

### Percentage of Stocks Above 50-day Moving Average



Source: Refinitiv, QNBFS Research

### Percentage of New Lows to Total Market



Source: Refinitiv, QNBFS Research

## Daily Company Recommendations

### VFQS (Vodafone Qatar)



On the daily charts, the stock managed to move above the consolidation range and close above the upper end of the Bollinger band, indicating bullish signs. The RSI is in positive zone. Traders could consider buying the stock at the current level or on declines, with a stop loss of QR1.980 for a target of QR2.012.

Source: Bloomberg, QNBFS Research

### IQCD (Industries Qatar)



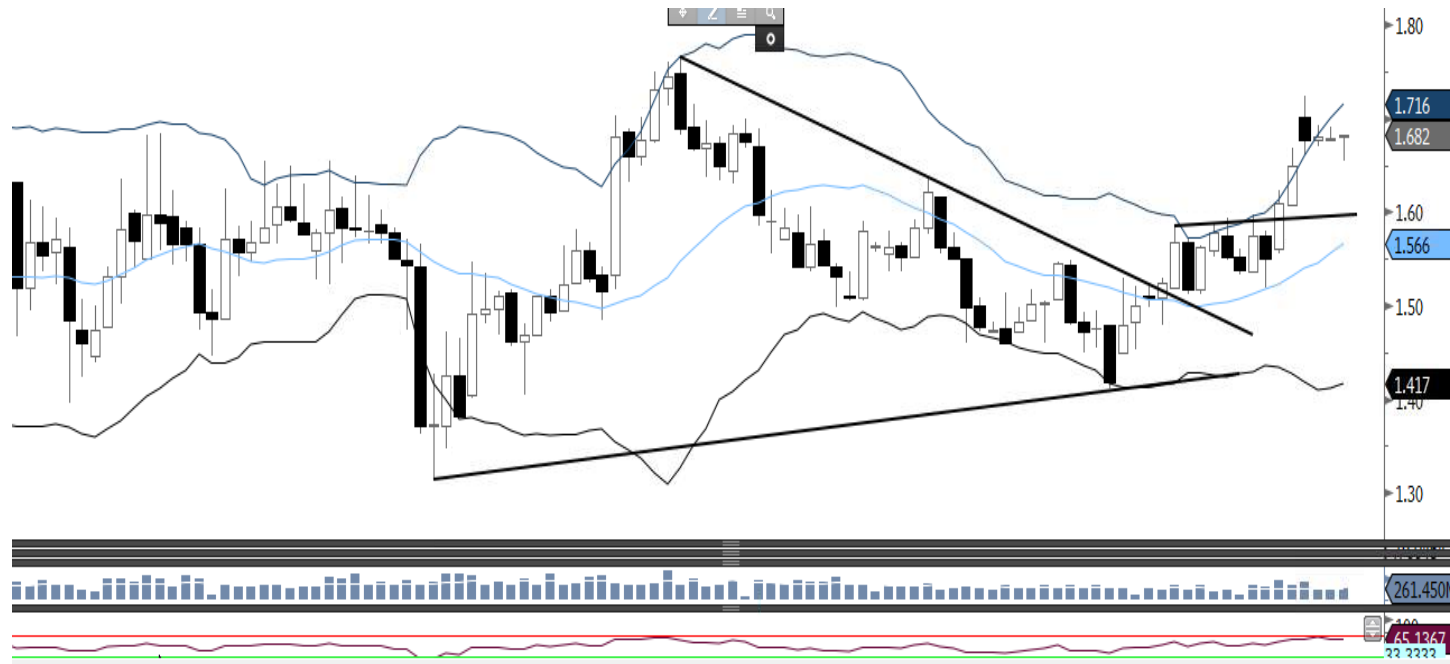
The stock after witnessing a small correction few days back managed to bounce back with a bullish candle and is also above the mid-Bollinger band. The RSI line is in buy zone. Traders could consider buying the stock at the current levels or on declines with a stop loss of QR13.14, for a target of QR13.46.

Source: Bloomberg, QNBFS Research



## Weekly Company Recommendations

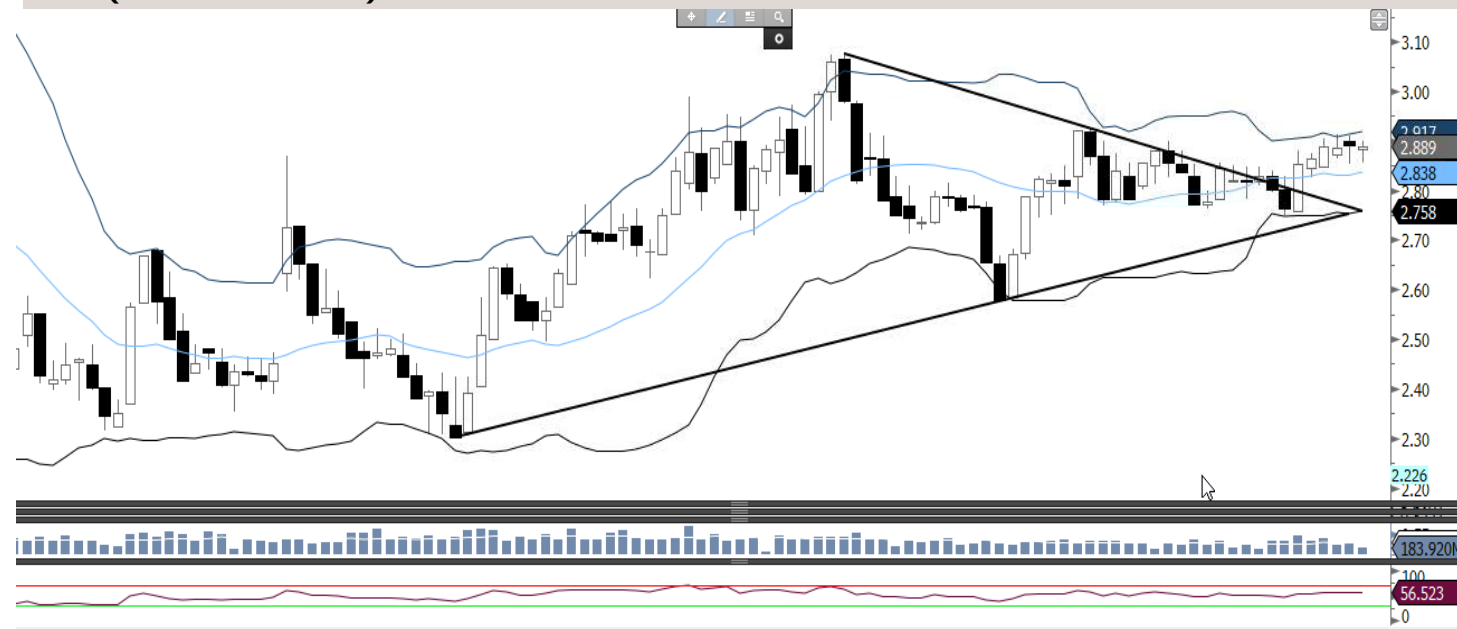
### QIGD (Qatari Investors Group)



On the weekly charts, the stock is gaining strength since it moved above the consolidation zone of the horizontal trendline. The RSI line supports this bullish observation. Traders could consider buying the stock at the current level or on declines, with a stop loss of QR1.634 for a target of QR1.718.

Source: Bloomberg, QNBFS Research

### BRES (Barwa Real Estate)



The stock has been moving higher ever since it has breached the resistance of the ascending triangle trendline. The RSI is also in the positive territory. Traders could consider buying the stock at the current levels or on declines, with a stop loss of QR2.854 for a target of QR2.925.

Source: Bloomberg, QNBFS Research

#### AKHI (Al Khaleej Takaful Insurance) - Short Term



The stock on the daily chart is trading in the ascending triangle range and above the mid Bollinger band. The RSI line is above 60, indicating positive signs. Traders could buy the stock at the current price or on declines with a stop loss of QR2.459 for a target of QR2.518.

Source: Bloomberg, QNBFS Research

#### QGTS (Nakilat) - Medium Term



The stock on the daily chart is gaining strength and is trading close to the upper Bollinger band. The RSI is in buying zone. Traders could consider buying the stock at the current market price or on declines, with a stop loss of QR4.418 for a target of QR4.538.

Source: Bloomberg, QNBFS Research

## Contacts

### **QNB Financial Services Co. W.L.L.**

Contact Center: (+974)4476 6666

[info@qnbfs.com.qa](mailto:info@qnbfs.com.qa)

Doha, Qatar

### **Shahan Keushgerian**

Senior Research Analyst

[shahan.keushgerian@qnbfs.com.qa](mailto:shahan.keushgerian@qnbfs.com.qa)

### **Roy Thomas**

Senior Research Analyst

[roy.thomas@qnbfs.com.qa](mailto:roy.thomas@qnbfs.com.qa)

### **Saugata Sarkar, CFA, CAIA**

Head of Research

[saugata.sarkar@qnbfs.com.qa](mailto:saugata.sarkar@qnbfs.com.qa)

### **Phibion Makuwerere, CFA**

Senior Research Analyst

[phibion.makuwerere@qnbfs.com.qa](mailto:phibion.makuwerere@qnbfs.com.qa)

### **Dana Saif Al Sowaidi**

Research Analyst

[dana.alsowaidi@qnbfs.com.qa](mailto:dana.alsowaidi@qnbfs.com.qa)

Disclaimer and Copyright Notice: This publication has been prepared by QNB Financial Services Co. W.L.L. ("QNBFS") a wholly-owned subsidiary of Qatar National Bank (Q.P.S.C.). QNBFS is regulated by the Qatar Financial Markets Authority and the Qatar Exchange. Qatar National Bank (Q.P.S.C.) is regulated by the Qatar Central Bank. This publication expresses the views and opinions of QNBFS at a given time only. It is not an offer, promotion or recommendation to buy or sell securities or other investments, nor is it intended to constitute legal, tax, accounting, or financial advice. QNBFS accepts no liability whatsoever for any direct or indirect losses arising from use of this report. Any investment decision should depend on the individual circumstances of the investor and be based on specifically engaged investment advice. We therefore strongly advise potential investors to seek independent professional advice before making any investment decision. Although the information in this report has been obtained from sources that QNBFS believes to be reliable, we have not independently verified such information and it may not be accurate or complete. QNBFS does not make any representations or warranties as to the accuracy and completeness of the information it may contain, and declines any liability in that respect. For reports dealing with Technical Analysis, expressed opinions and/or recommendations may be different or contrary to the opinions/recommendations of QNBFS Fundamental Research as a result of depending solely on the historical technical data (price and volume). QNBFS reserves the right to amend the views and opinions expressed in this publication at any time. It may also express viewpoints or make investment decisions that differ significantly from, or even contradict, the views and opinions included in this report. This report may not be reproduced in whole or in part without permission from QNBFS.

COPYRIGHT: No part of this document may be reproduced without the explicit written permission of QNBFS.